



## TASSTA TRANSPORTS YOUR GOODS FROM STORE TO DOOR

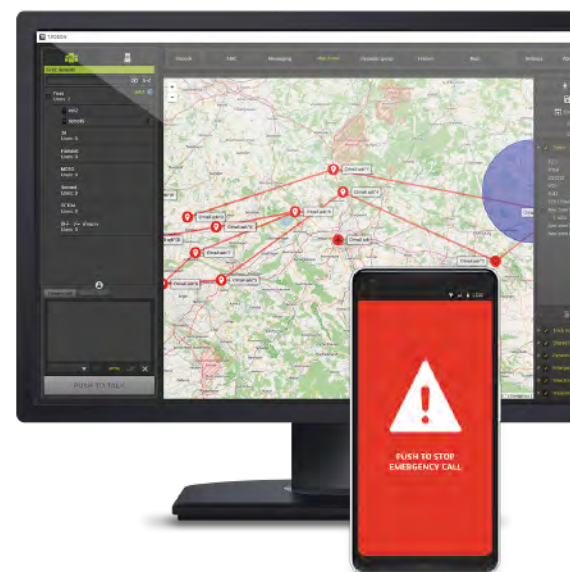


### SITUATION

Freight forwarding companies are some of the most sophisticated and logistically intricate entities worldwide. These companies normally operate internationally and routinely deliver products over long distances. Outbound logistics, procurement logistics, industrial logistics and contract logistics are operational areas that all need to be optimized so that these companies can efficiently and effectively deliver goods to their customer base.

Delivering goods world-wide requires a homogenic network of subsidiaries, numerous agencies and local reliable partners to ensure fast and flexible connections. These companies' extensive services across the world ensures that customers of all size receive timely deliveries of goods.

'TASSTA's solution is ideal for any Forwarding Agency, Trucker, Warehouse, Store, or private customer who needs an effective and worldwide communication network. It also provides tracking data and map-based information that is extremely useful in pinpointing people and goods.



## MARKET CHALLENGES

Meeting the needs of the Trucking Industry requires a sophisticated communications solution that also provides dispatch, emergency alerting and GPS tracking. Previously these features could only be provided by multiple vendors and multiple solutions and devices. With today's smartphones that has changed, and the industry is beginning to demand more sophisticated yet simple-to-use applications.



With 24/7 operations comes the inevitability of accidents. And for this reason, any solution needs to have emergency alerting features that help keep workers safe and management in tune with what is happening in real-time.



## SOLUTION

The T.RODON application provides a number of very useful features. In conjunction with the T.FLEX client, it is a full-featured dispatch, command and control center. It can transmit Push-to-Talk (PTT) messages and data to individual users, create and track tasks, provide voice recording and monitoring and includes GPS and localization support to manage user activity.

T.FLEX has a number of other options that can be configured to provide more advanced communication capabilities. Using the sensors within the phones, "Man Down" alerts can be sent when a user has fallen; GPS and In-House Localization can transmit the exact location of all and even alerting devices; and Video and Audio Feeds can be enabled from any device that pushes the emergency button. T.FLEX uses the immense computing and sensor functions present in today's devices to deliver advanced communication and emergency services. Utilizing standard, off-the-shelf Android, Windows desktop or iOS mobile clients, TASSTA turns these devices into radios, with alarming and group communication tools and allows for a host of advanced, yet simple to configure, emergency features.

TASSTA's solutions also leverage the company's investment in WIFI and hardware devices to provide an over-the-top application that can suit the needs of several different groups within the facility. Drivers, managers and office workers can use a simple device to send an Emergency alert if necessary; Transportation, security and other operational departments can use the Push-to-Talk (PTT) application in lieu of a single purpose radio and can also use T.RODON as a dispatch solution managing work tickets with its Task Manager module.

Since these companies are mainly global and working across countries, network coverage is essential when effective communication is needed. Being able to detect impact accidents or use the "guard tour" feature to complete certain routes for security are TASSTA capabilities that can be used for any driver and base station in the Trucking Industry. These features allow for constant monitoring of users and assets.

The "guard tour" feature can be configured with specific checkpoints and timers which allows the control center to monitor movement. TASSTA also has sophisticated techniques to create "geozones", in which user devices will send messages to the dispatcher when leaving the zone.

TASSTA's asset tracking with Bluetooth Low Energy (BLE) Beacons ensures that all valuable packages are continually being monitored. This system will send an automatic alarm if the signals are lost, which will trigger the control center to begin an investigation.

Lastly, TASSTA's Lone Worker Protection Alarming Solution (LWP) functionality is one of the most useful TASSTA Features for truckers on long routes over difficult terrain. If the truck has an accident, the LWP function immediately sends an alarm to T.RODON at the control center to immediately send help.

In a world of globalization and international export and import growth, the needs of effective and secure communication for Freight Forwarding companies is significant. TASSTA's solutions ensure that companies implement consistent standards to increase the safety of their personnel and goods. This contributes to a unified processing and transparent shipment process, benefiting its customers.