

- ✓ **MAN DOWN**
- ✓ **NO MOVEMENT ALARM**
- ✓ **PERIODIC CHECK**
- ✓ **EMERGENCY CALL**
- ✓ **REMOTE CAMERA / RECORDING**
- ✓ **CRISIS TEAM**

following the requirements of
BGR 139
STANDARD

Lone Workers are those who work by themselves without close or direct supervision. Establishing a healthy and safe working environment for Lone Workers can be different from organizing the health and safety of other employees. They should not be put at more risk than other people working for you. It will often be safe to work alone. However, the law requires employers to think about and deal with any health

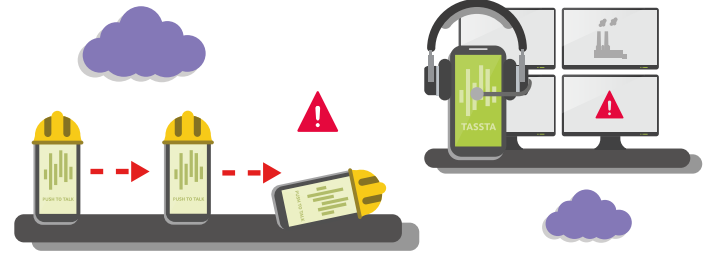
and safety risks before people are exposed to their work environment. TASSTA's Lone Worker Protection is an emergency feature in your employee's pocket. Whether your lone workers are working in a remote or dangerous location or they are just temporarily away from their team, TASSTA's Lone Worker Protection feature keeps you connected to your team.

MANDOWN



An automatic emergency option uses an accelerometer on the mobile device to detect a fall and sends a text message alert to the emergency contact. The text message indicates username, group membership and GPS coordinates with a link to a map and the exact location.

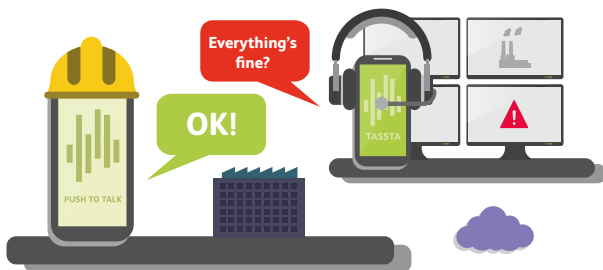
NO MOVEMENT ALARM



An effective way to make a pathway of workers safer. Being active, the app uses GPS location data obtained from a mobile device to detect a user movement.

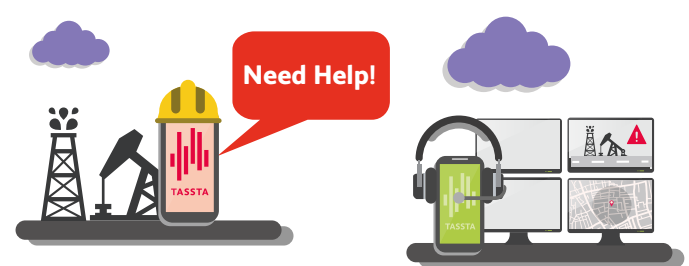
If a user remains motionless for a certain period of time, an Inactivity Timer will start. If there is still no movement, the application sends an Emergency Alert and automatically initiates an Emergency Call.

PERIODIC CHECK



LWP Periodic check provides a pop-up dialog window "Everything fine?" after a specified time interval that you can set in T.Commander. If a worker doesn't respond, the application initiates an Emergency Call and an Emergency Alert.

EMERGENCY CALL



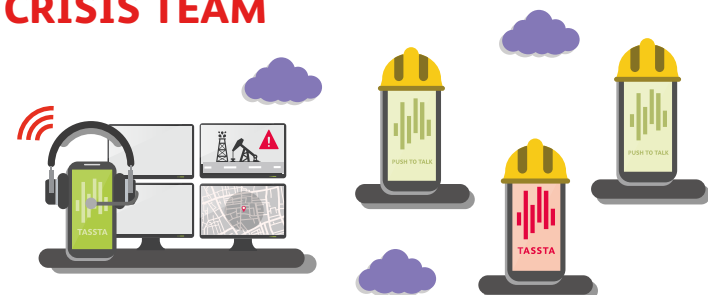
For use in emergency or distress situations. A user initiates this feature from the display or a pre-programmed emergency button on the device. The activation of Emergency will immediately send an acoustic and visual alarm to the dispatcher, alerting him of an emergency situation.

REMOTE CAMERA / RECORDING



An operator is able to access the microphone or camera of the desired user remotely. It might be very important for critical environments like security services or military where the person can be attacked or working in high-risk conditions.

CRISIS TEAM



A user is provided with the possibility to include the other members of the team to a crisis team. They will receive an Emergency Call in case of an accident or an emergency situation. The members of the crisis team are defined in T.Commander.