



**TASSTA**

# PRODUCT PORTFOLIO



# THANK YOU FOR YOUR INTEREST IN TASSTA!

## Our name

The name TASSTA is made  
of 3 key words:

“TA

stands for the  
first two letters of  
the word TALK

“SS

stands for sending  
meSSages

“TA

are the last two  
letters in the  
word DATA

**TASSTA IS WHAT WE DO,  
WE OFFER VOICE COMMUNICATIONS,  
MESSAGING AND DATA SOLUTIONS  
FOR YOU TO BE CONNECTED TO EVERY  
CORNER AROUND THE GLOBE.**

The core of the existing TASSTA team has strong expertise in the professional mobile radio market. Our developers have spent years working as in-the-field service engineers for the principal TETRA providers in different projects all over the world. TASSTA's CEO, Kaveh Hosseinzadeh, has over ten years of experience in managing companies in professional mobile radio communications.

With a background like this, the team put all its efforts in bringing a revolutionary product on the market – an innovative PTT (Push-to-Talk) solution for PoC/IP users that meets all requirements for communication, organization and security. The team conserves every single feature of digital mobile communication and makes them usable on common smartphones, tablets and computers.

Existing TETRA or DMR networks can easily extend their coverage by connecting to TASSTA. The development of the TASSTA product range started in 2012. Today our system consists of different types of components: T.Lion is the communication server, T.Brother is for critical redundancy, T.Commander is our professional configuration and administration tool, T.Recorder is the software solution for secure recording and playback, T.Flex is the application running on client devices such as smartphones and tablets, T.Rodon is our command and control center desktop solution and T.Bridge is a gateway to other existing networks.

**IF YOU CAN THINK IT, WE CAN DO IT!**

Being always one step ahead and offering a product that cannot be found in the portfolios of our competitors – this is the vision that the TASSTA team is committed to. We are continuously working to improve TASSTA to make it a perfect integrated communication solution for our customers.

# WHO WE ARE?

The name TASSTA is made up of 3 keywords:



Founded in  
**2005**  
in Hanover, Germany

Since  
**2013**  
on the market

More than  
**50**  
employees worldwide

## REFERENCES



# PROFESSIONAL COMMUNICATION PLATFORM

FOR ANY ORGANIZATION OF ANY SIZE



## TASSTA vs. TETRA / DMR

FEATURE	TASSTA	TETRA / DMR
PUSH TO VIDEO	●	●
MANDOWN	●	●
MULTIPLATFORM CLIENTS AND ACCESSORIES	●	●
BROADCAST CALL	●	●
GROUP, INDIVIDUAL & PRIORITY CALL	●	●
DYNAMIC GROUP CALL	●	●
MESSAGES / SDS & STATUS MESSAGES	●	●
DATA TRANSFER	●	limited transfer rate
TASK MANAGEMENT	●	✘
GPS LOCATION, GPS ROUTE, GEOFENCING	●	●
INDOOR LOCALIZATION	●	✘
CRITICAL COMMUNICATION	●	●
FAST CALL SET UP	●	●
SECURITY / ENCRYPTION	●	●
EMERGENCY CALL	●	●
REMOTE FEATURES (PICTURE & VOICE)	●	Voice
ALARM NOTIFICATION	●	●
VOICE RECORDING AND CALL HISTORY	●	●
REPLAY ON END DEVICE	●	✘
NETWORK COVERAGE	worldwide	for extension additional base stations required
INDIVIDUALIZATION	limitless	●
QR CODE, BAR CODE, NFC	●	●
LONE WORKER PROTECTION (LWP)	●	✘
DYNAMIC GROUP NUMBER ASSIGNMENT	●	✘
EMPLOYED STANDARDS	CDMA, GSM, UMTS, LTE, WIFI	TETRA / DMR
CONNECTION TO EXTERNAL SYSTEMS	different system interfaces on end Wdevice & system over API	PEI interface on end device or a switch over API

# INDUSTRIES

Quality and efficiency of communications achieved through TASSTA technology have a profound impact on all processes in business, government and public safety. Combined with lower maintenance costs and re-use of the existing equipment, TASSTA communication solutions can give you a significant competitive advantage. In addition, TASSTA might be an essential element in the strategic plan of many organizations.



POLICE



ARMY



EMERGENCY SERVICES



AGRICULTURE



AIRPORTS



BUILDING & CONSTRUCTION



COURIERS & EXPRESS SERVICES



FIRE BRIGADES



EVENT MANAGEMENT



HEALTHCARE



PUBLIC OR PRIVATE SECURITY COMPANIES



LOGISTICS



NAVIGATION, FREIGHT & PORTS



PUBLIC TRANSPORT



GOVERNMENTAL ORGANIZATIONS



TAXI SERVICES

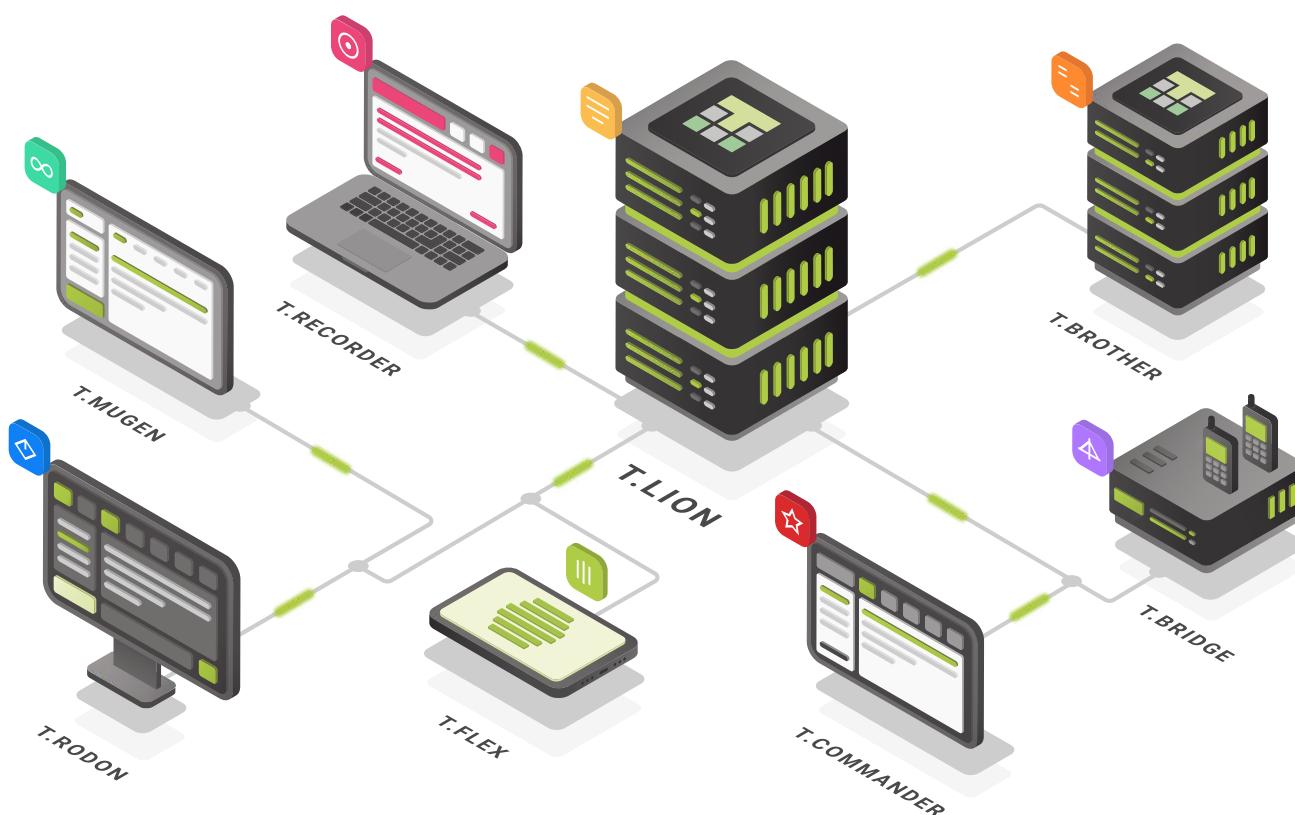


HOSPITALITY

# TASSTA SOLUTIONS

- TASSTA offers a modern Push-to-Talk solution which takes advantage of all the technical capabilities of regular smartphones.
- TASSTA is the all-in-one solution for individual and group calls, emergency communications, messaging, data, GPS and indoor positioning, with the detailed activity history recording. By leveraging the power of global IP networks, TASSTA customers can expand beyond geographic boundaries and unify distributed teams into a single taskforce.
- TASSTA allows organizations to re-use the existing equipment and interconnect with PMR networks, enabling the business as usual with minimal investments.

## ECOSYSTEM



# TASSTA FEATURES

## PROFESSIONAL COMMUNICATION



GPS LOCATION, GPS ROUTE, INDOOR LOCALIZATION



REMOTE CAMERA AND MIC CONTROL



PUSH TO VIDEO FOR SITUATIONAL AWARENESS



VOICE RECORDING AND CALL HISTORY



BRIDGE TO PMR



MESSAGES, FILE EXCHANGE AND ALERTS



EASE OF ADMINISTRATION



GROUP, INDIVIDUAL, PRIORITY CALLS



AES 256 ENCRYPTION, INDIVIDUAL KEY MANAGEMENT



TASK MANAGEMENT SYSTEM



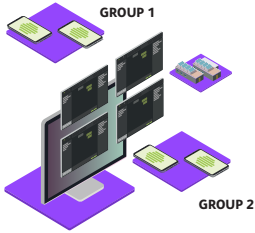
MULTIPLATFORM CLIENTS AND ACCESSORIES



EMERGENCY SOLUTION ALARMING, MANDOWN, LONEWORKER PROTECTION



# TASSTA FEATURES



GROUP CALL



STATUS MESSAGE, TEXT AND DATA EXCHANGE



TASK MANAGEMENT



INDIVIDUAL CALL



GPS LOCALIZATION



GEOFENCING



PRIORITY CALL



GPS ROUTE



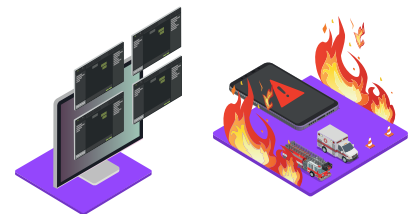
E2E ENCRYPTION



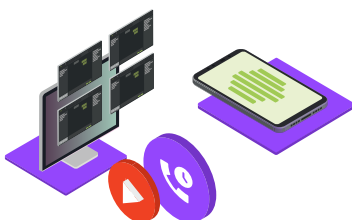
DYNAMIC GROUP CALL



INDOOR LOCALIZATION



EMERGENCY CALL & LONEWORKER PROTECTION



VOICE RECORDING AND CALL HISTORY



VIDEO



BROADCASTING

# T.Lion



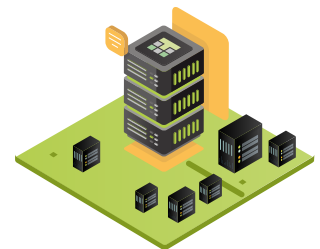
## Cloud-Based and On-Premises Communication Server



T.Lion is the TASSTA communication server – the main component of the TASSTA communication network as a whole. It is the heart and brain of the system. It shares resources among clients on demand and provides reliable communication with sub-second performance. Available in SaaS (software as a service) form or as a standalone on-premises deployment.

## STANDALONE

TASSTA services are hosted on your on-premises servers in your data center. You get maximum flexibility and full control over your data on your server.



## CLOUD

Hosted on top-of-the-line powerful web servers, designed as a Higher Availability system. The service is always up and running. Scheduled backups are set up for all data stored in accounts.



## T.COMMANDER: MANAGE SERVER RESOURCES

T.Commander is a web-based application created to control resources and features on TASSTA servers. It is designed for a large number of servers and nodes. Nodes are the logical representation of hosted resources that are handled by groups of servers. With this approach, T.Commander allows flexible maintenance and system expansion, deployment of new servers and nodes.

As a result, you have a single tool to control your environment. In particular, T.Commander lets the administrator create, delete and edit users, teams and groups. It also gives you tools to manage the set of functionality for each individual user. All the features that T.Flex and T.Rodon provide can be individually managed, enabled and disabled through T.Commander.

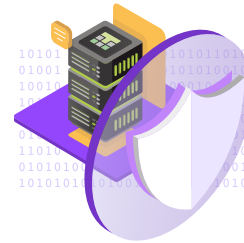
# T.LION FEATURES

## ■ Scalability



The T.Lion system is enormously scalable and can run on nearly any combination of computing hardware and software. Its architecture enables multi-server connectivity, while providing cost efficiency and system redundancy by design.

## ■ Data Security



TASSTA network security is a more comprehensive solution than just asking for the user name and password. The T.Lion server provides the ability to selectively manage and administer access to a variety of TASSTA services and features, and to control the rights of each user and each group.

## ■ Data and Voice Encryption



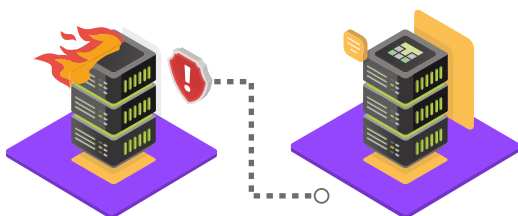
In order to secure T.Lion against advanced threats in complex and evolving cloud services, organizations must increasingly take a data-centric approach to safeguarding their sensitive information. TASSTA offers a full encryption portfolio that provides persistent protection of voice and data for a more secure level of communication.

## ■ Fleet Management



For staff responsible for fleets and operations, the T.Lion server offers specialized monitoring and tracking tools, grants them the ability to trace and record the movements of their mobile assets and workforce, record accurate GPS data and keep the history of their voice and data communication for a long time.

## ■ Redundancy



A way to improve availability and performance of TASSTA communication facilities. By using T.Brother, the redundant TASSTA server, in different geographically dispersed data centers, you ensure that end users take advantage of TASSTA services with maximum reliability.

## ■ Fallback Operation



A node can be deployed in a field environment and act as a standalone fallback-mode server. Furthermore, the node can be configured as part of a TASSTA cluster and connected back to the system as soon as the link is available again.

# T.Flex

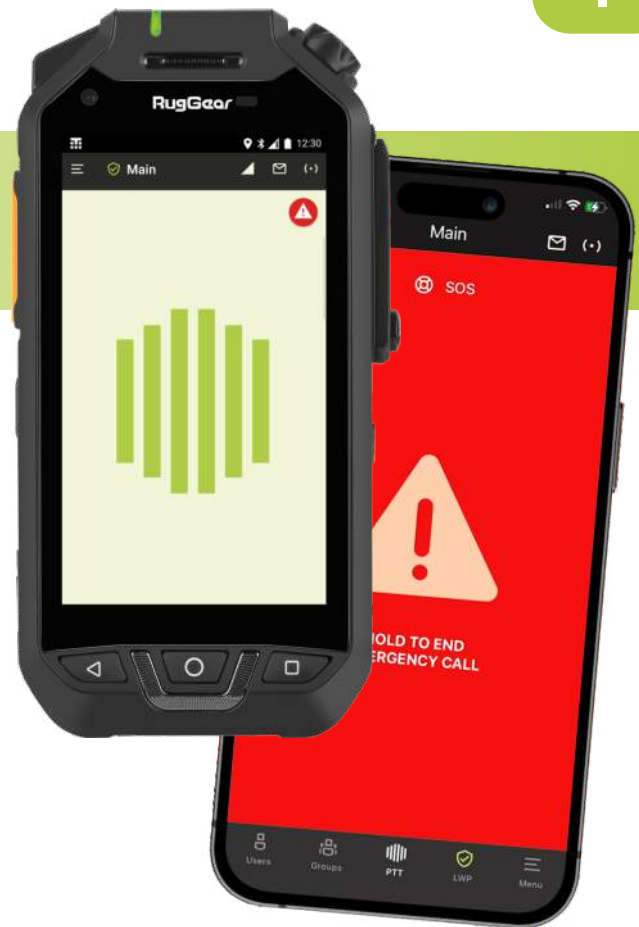


## Professional Push-to-Talk over broadband solution

This TASSTA application runs on mobile devices powered by the two most popular mobile operating systems – Android and iOS. It works over Wi-Fi and any mobile network (such as 3G and LTE). The app is designed for communicating under poor conditions and being able to retain acceptable communication quality even on GPRS and EDGE (2G) networks.

T.Flex provides always-on PTT operation, messaging and status reporting, voice recording and GPS location management, with a modern user interface. T.Flex can run in parallel with your other business applications, enhancing your device integration capabilities. Extensively managed by T.Commander, the app is under control by the administrator.

The application is provided with additional features for richer functionality and more usefulness in critical situations.



Certified



## T.FLEX FEATURES

- Group call
- Individual call
- Priority call
- Dynamic group call
- Voice recording and call history
- Status messages, text and data exchange
- GPS localization
- GPS route
- Indoor localization
- Video
- Task management
- GPS history tracker
- E2E encryption
- Emergency call and Lone Worker Protection
- Remote control

# T.FLEX SECTORS / INDUSTRIES

Fields that require Hazardous Certified Devices



Mining



Chemical Plants



Building & Construction



Oil & Gas Plants



Police



Fire Brigades



Rescue



Airports



Security



Logistics



Hospitals



Agriculture

The need for an intrinsically safe device arises in 60% of all manufacturing businesses, including oil and gas, chemical and pharmaceutical industries, textile, cosmetics, aerospace, automotive, food, agricultural, mining and munitions industries – to name just a few.



AVAILABLE ON PLATFORMS:

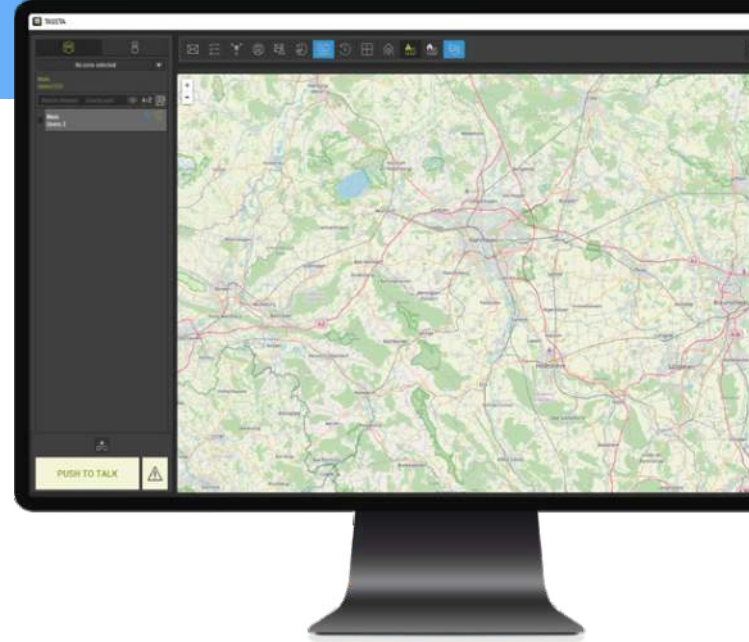




## Professional Command and Control Center Solution

Command and Control Center Solution by TASSTA provides powerful and flexible features. These features strengthen the position of TASSTA technology at the highest professional level of communication.

T.Rodon can be deployed as a desktop application, or it can run in the field in mobile environments. It has an easy and intuitive installation process and can be set up on a wide range of Windows computers in minutes.



## T.RODON FEATURES

- Group call
- Individual call
- Priority call
- Dynamic group call
- Voice recording and call history
- Status messages, text and data exchange
- GPS localization
- Guard tour
- Map Tools
- Indoor Localization
- Task management
- Emergency call receiving
- E2E encryption
- Emergency call and Lone Worker Protection
- Remote control

# T.RODON SECTORS / INDUSTRIES

## Fields that require Hazardous Certified Devices



**Mining**



**Chemical Plants**



**Building & Construction**



**Oil & Gas Plants**



**Police**



**Fire Brigades**



**Rescue**



**Airports**



**Security**



**Logistics**

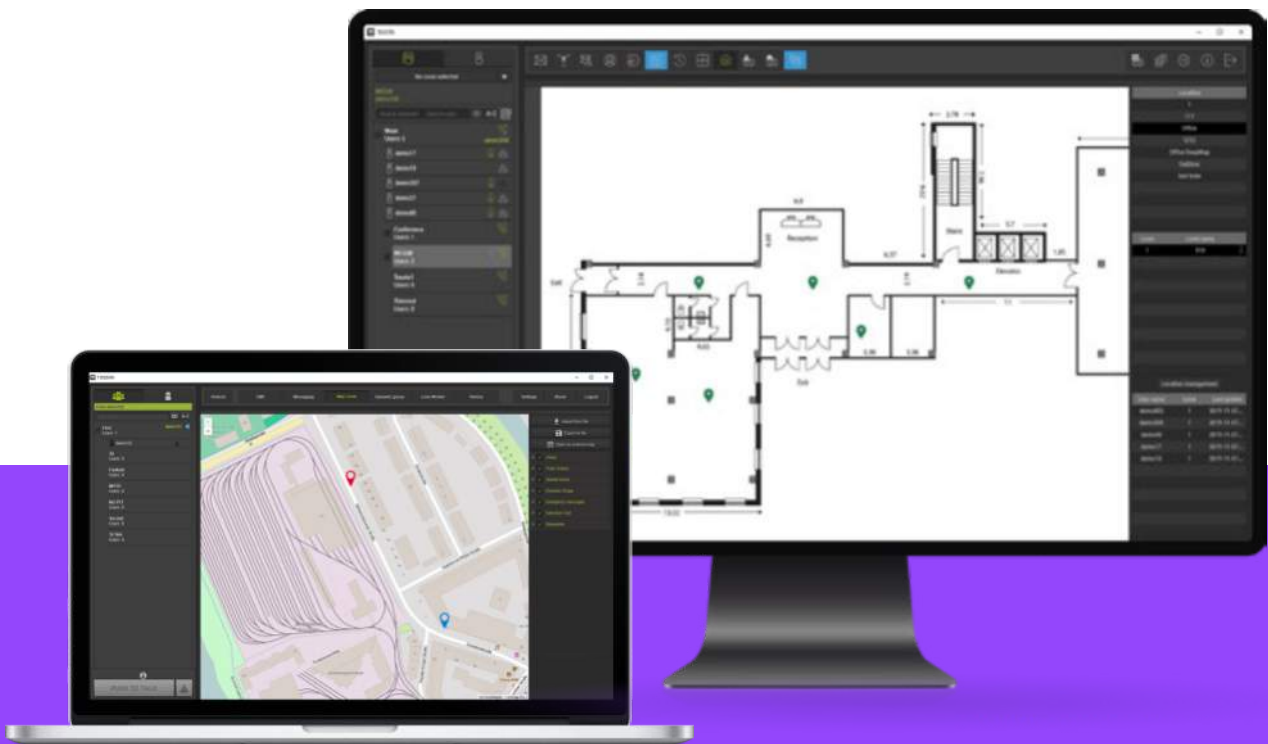


**Hospitals**



**Agriculture**

The need for an intrinsically safe device arises in 60% of all manufacturing businesses, including oil and gas, chemical and pharmaceutical industries, textile, cosmetics, aerospace, automotive, food, agricultural, mining and munitions industries – to name just a few.



# T.Bridge



## Professional middleware solution interconnecting TASSTA and PMR networks

Cost-efficient and expandable application to extend a radio solution.



## SUPPORTING NETWORKS

TETRA HYTERA ®	KENWOOD
TETRA DAMM ®	NEXEDGE ®
TETRA SEPURA PEI ®	P25 ®
DMR HYTERA ®	MPT 1327 ®
MOTOTRBO ®	ANALOG RADIO ®
KENWOODCONVENTIONAL ®	TAIT ®
KENWOOD DMR®	ICOM ®



## BENEFITS & KEY FEATURES

T.Bridge is a middleware solution that helps businesses overcome the challenges of integration by enriching PMR systems with TASSTA features.

The T.Bridge middleware securely connects the enterprise. It's easy to use and easy to scale. T.Bridge is designed to integrate TASSTA with a PMR radio network for voice (group and individual calls) and message communication. Furthermore, it is used as a supplementary part of the TRodon command and control center solution.

### FLEXIBILITY

T.Bridge improves the flexibility of your network. You can connect two incompatible PMR systems (for example, TETRA and MOTOTRBO™). In addition, TASSTA can even connect users who are working outside your radio coverage and in that way increase your range. Users connected by TASSTA have freedom in choosing their own device – smartphone, tablet or desktop – because iOS, Android and Windows are all supported operating systems.

### COMPATIBILITY

T.Bridge is a universal solution that connects PMR networks with each other through an API and makes the PMR networks compatible with TASSTA. T.Bridge implements the concept of ensuring vendor independence for users.

### SCALABILITY

There are no limits on expanding an existing PMR solution. With T.Bridge, you can connect another PMR network to an existing one or integrate a TASSTA network. Add other resources to expand your system as necessary – anytime and everywhere.

### HARDWARE

The T.Bridge solution is optionally provided as a preconfigured hardware unit.

- Case: aluminium & dust-proof
- Interfaces on rear side: 1 x VGA, 2 x Gigabit-LAN, 4 x serial, 2 x USB 2.0



Power	Input Voltage 100-240 VA C (47.63Hz)
-------	--------------------------------------

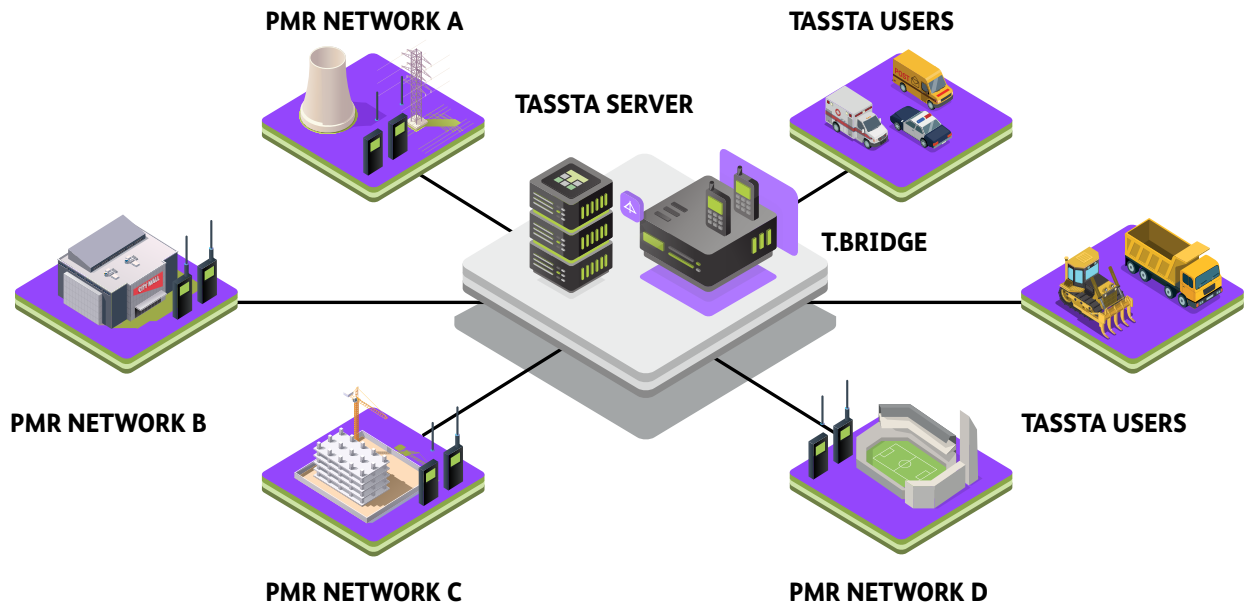
Operating temperature	0 °C to 60 °C
-----------------------	---------------

Weight	1,25 kg
--------	---------

Dimensions (HxWxD)	21cm x5,5 cmx 12,6 cm
--------------------	-----------------------



# T.BRIDGE FEATURES



**Group Call** Voice communication in group. One of the main features supported by any T.Bridge configuration.

**Individual Call** Individual voice communication. One-to-one simplex call.

**Individual Message/ Group Messages** The feature allows users to send and receive messages. T.Bridge handles all the routine to route messages between the PMR and TASSTA networks, delivering messages between PMR networks or from TASSTA to PMR and the other way around.

**GPS tracking** This feature provides an opportunity to obtain GPS coordinates from PMR terminals and TASSTA Clients. The GPS data can be displayed on the TASSTA Desktop Client map or routed to specified interfaces.

**Intelligent Hub** The PMR networks can be interconnected with each other via the TASSTA bridge application no matter how far apart in the world.

**Interface to PMR** PMR networks can be interconnected with each other via the TASSTA bridge application no matter how far apart in the world. T.Bridge is connected to the PMR radio infrastructure through well-defined interfaces (such as API, PEI or XCMP). The features and settings of T.Bridge are defined by the scope of the PMR interface in use and its supported functionality.

**Different Frequency Bands** T.Bridge is not limited by frequency band. It fully depends on radio network infrastructure.

## Configuration

Bridge Configuration	Description	On request:
Digital-TASSTA	Interconnection between TASSTA and Digital Network	Analog-TASSTA,
Digital-Digital	Interconnection between two or more Digital Networks	Analog-Analog,
Digital-TASSTA-Digital	Interconnection between two or more Digital Networks and a TASSTA Network	Analog-Digital,
		Analog-TASSTA-Digital

# T.Qconnector

## TASSTA Patching Solution

Professional middleware solution for interconnecting different channels from different radio solutions which run on the same server.

```
1 func patchChannels(ctx context.Context, chn1, chn2 *radio.Channel) {
2     for {
3         select {
4             case <-ctx.Done():
5                 return
6             case a1 := <-chn1.audio:
7                 chn2.Send(a1)
8             case a2 := <-chn2.audio:
9                 chn1.Send(a2)
10            case sig1 := <-chn1.signaling:
11                chn2.Signal(sig1)
12            case sig2 := <-chn2.signaling:
13                chn1.Signal(sig2)
14        }
15    }
16 }
```

T.Qconnector serves as the interface between radio transmitter/receiver A and radio transmitter/receiver B, so that two-way radio users can make and receive PTT group calls even if their radio systems are incompatible.

T.Qconnector is a radio-to-radio interconnection technology. It is designed for common radio carriers, co-ops, utilities and private systems where a number of different users need to communicate between different radio systems.

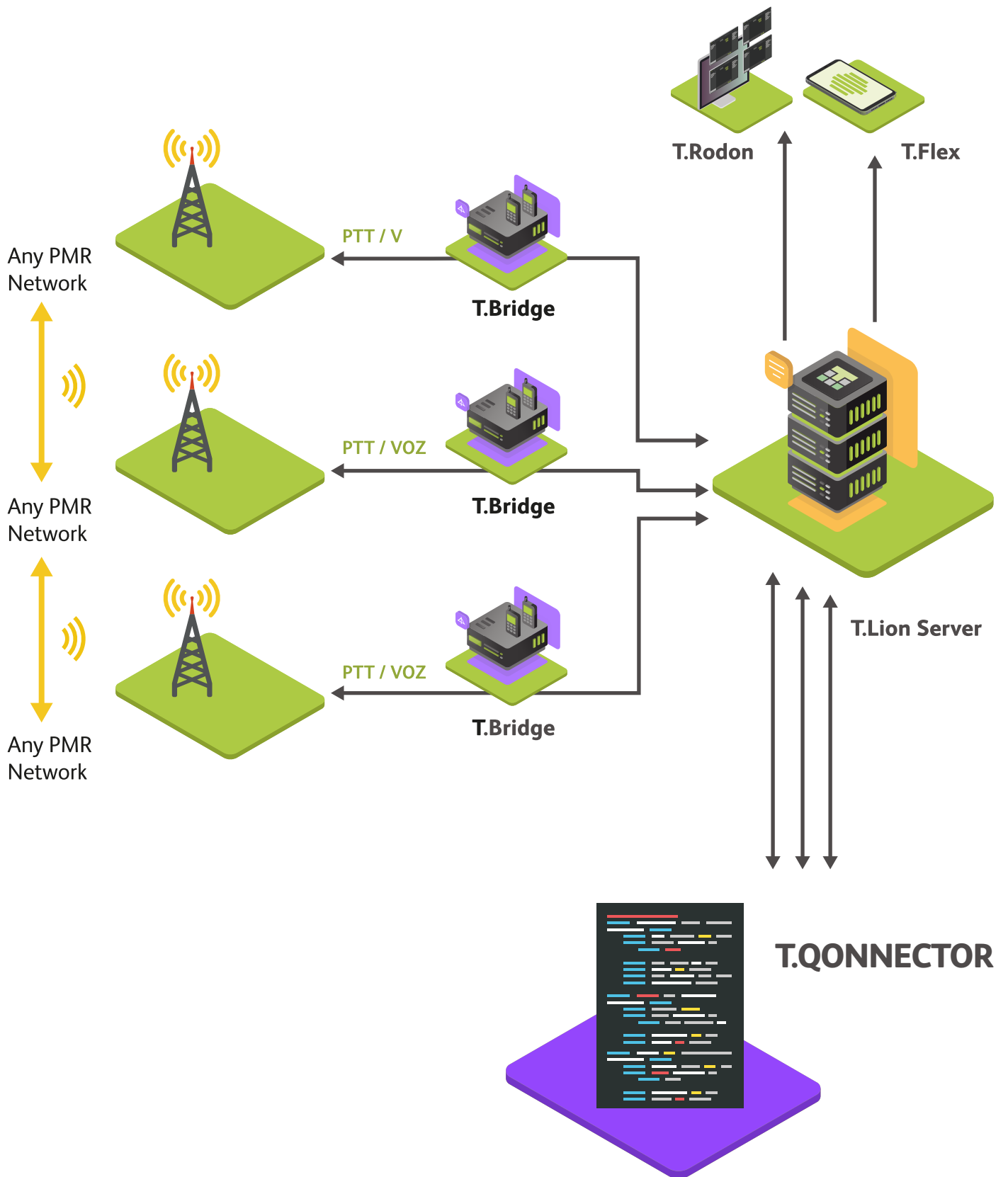
This provides flexible operation as a radio patch between different radio vendors.

TASSTA's patching solution allows receiving PTT and voice flows among several bridges (connected to different brands) in one communication solution, with TASSTA smartphone client apps included in this communication.

## SUPPORTED NETWORKS



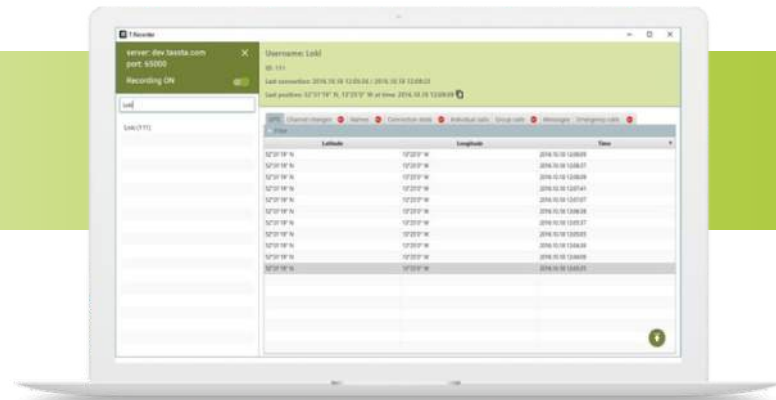
# T.QONNECTOR



# T.Recorder



## Advanced Voice, Data and Call Recording



T.Recorder is a smart, reliable and easy-to-use TASSTA software solution for secure recording, rapid voice replaying and data communications within the TASSTA network. It is designed to help organizations keep the records and enhance their mission-critical responses.

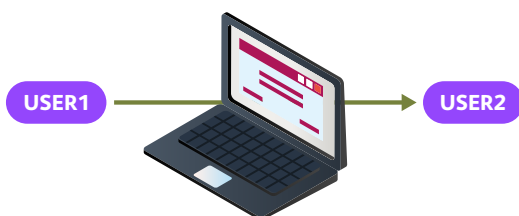
T.Recorder provides a great set of tools to sort, search and replay voice records, view message history and monitor user activity in the channels. Furthermore, T.Recorder grants the ability to analyze user movements based on GPS location history.

In order to keep data secure, all the data and voice records are stored separately on the TASSTA server. However, T.Recorder gives you the opportunity to back up all voice communication on a local drive.

T.Recorder is designed to be a user-friendly application, and the software's GUI makes it easy to navigate through data. The software is set up to make monitoring and collecting data easy for anyone; you do not have to be tech-savvy. Everyone will benefit from it, as it is designed to suit all consumer needs with ease.

## T.RECORDER FEATURES

### ■ Name changing



View the history of login changes. Helps you keep track of occurrences where user data becomes modified.

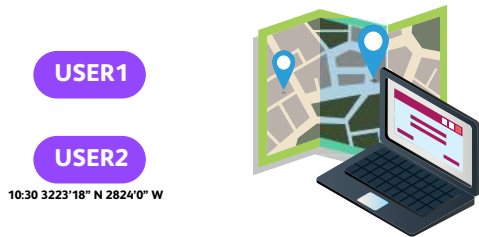
### ■ Connection status



View the login history of TASSTA clients – T.Flex or T.Rodon. Lets you know the exact times of user logins and logouts.

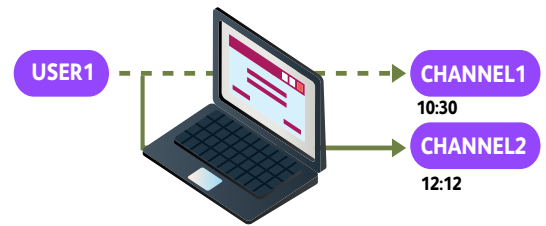
# T.RECORDER FEATURES

## GPS RECORDING



An operator can quickly access the movement history and keep track of a specific T.Flex user. The coordinates are displayed with reference to the time of change. T.Recorder has the ability to export popular GPS data formats, such as CSV, and the resulting data can be imported into mapping software, such as Google Earth, to create a 2D representation.

## CHANNEL CHANGING



View user movements through the channels, and track the user actions, channel titles and the channel join timestamps.

## INDIVIDUAL & GROUP CALL RECORDING



T.Recorder users can locate and export every individual and group call. In addition to call data, details such as time, duration, channel data, login and alias are also available. This data is known for both the calling user and the accepting user.

## MESSAGE RECORDING



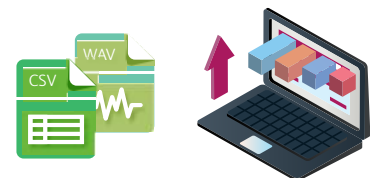
View the data for all written communication on a server. T.Recorder users can view sender and recipient information and read the contents of every message. All emergency messages are highlighted red to indicate the severity status. You can export the text messages and transferred files to a local drive.

## EMERGENCY CALLS RECORDING



Because every emergency call is tracked and recorded, each of them can be examined for compliance with the procedures applicable in critical situations. The data for each call is displayed and can be exported.

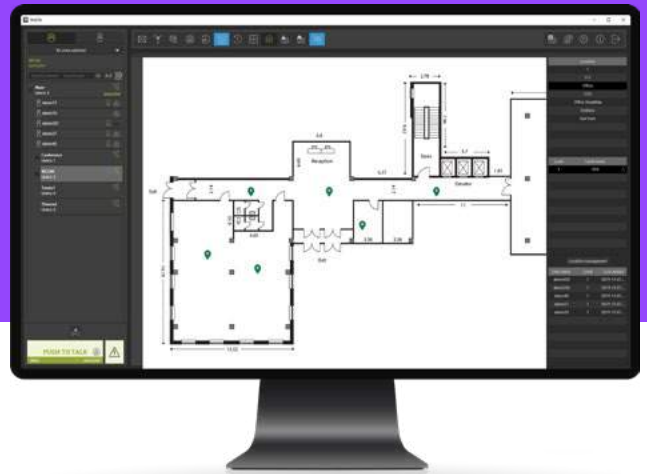
## DATA EXPORT



With T.Recorder, you have the ability to export all data in CSV format and download audio recordings in WAV format.



# INDOOR LOCALIZATION



## BENEFITS

- Continuous collection of information about the location of personnel in high-rise buildings and underground structures.
- Locations of staff members are displayed on the map of a building in real time.
- One-meter accuracy for locations.
- Built-in measurement and training system.
- Detailed maps of structures, zones, individual buildings and building floors.
- Supported by both types of client: T.Flex and T.Rodon.
- Integration of emergency calls.
- Deployment of the system in the shortest possible time.

## TECHNOLOGY

An important complement and an alternative to GPS, indoor localization lets you pinpoint the locations of users inside buildings and underground structures. Unlike GPS, it doesn't provide global coverage, but can be more accurate, efficient, and adaptive to local environments such as airports, metro stations, tunnels, and other indoor areas.

Technologies used in indoor localization help you track users even in places where the GPS signal is completely absent. Fingerprinting is the best-known approach to solving these problems.

GPS positioning is based on signals sent by satellites. The more satellites the GPS receiver can find, the higher the accuracy. In a similar way to GPS satellites, fingerprinting requires WLAN hotspots, access points and Bluetooth beacons.

Classic TASSTA indoor localization is based on location fingerprints of existing environments – a database of

measured signals from wireless LAN access points (WLAN) or Bluetooth beacons scattered about the location.

Using the TASSTA implementation of fingerprinting technology lets you determine the position of one person or an entire group with one-meter accuracy. Moreover, the built-in tools of TASSTA clients help you deploy indoor navigation on the premises in the shortest time possible. Today, the classic TASSTA solution is in use in many industries and by various enterprises.

For customers who cannot or prefer not to rely on fingerprinting, TASSTA also offers alternative indoor localization methods: technology provided by Infsoft and simplified indoor positioning based on fixed beacons.

# INDOOR LOCALIZATION FEATURES



**INCREASES SAFETY**

**REDUCES COSTS DUE TO OPTIMIZED COORDINATION**

**HELPS TO AVOID COLLISIONS AND ROAD ACCIDENTS**

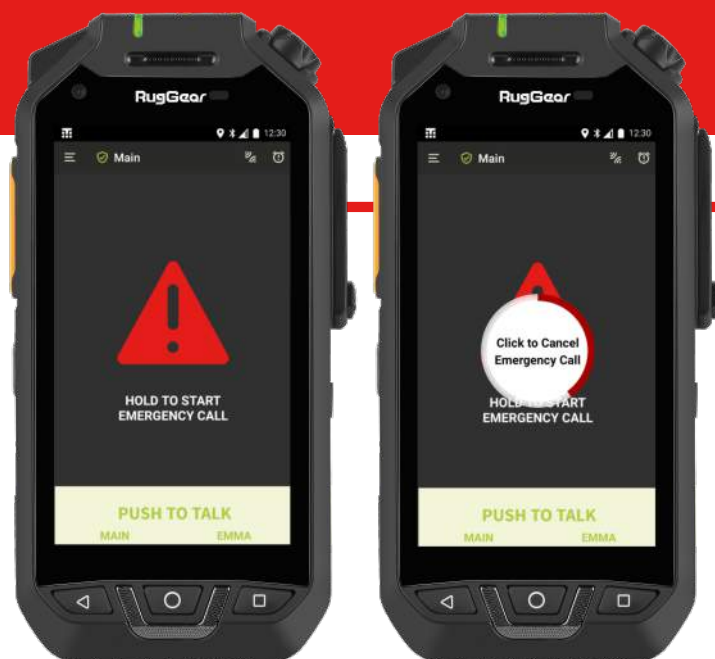
The ability to locate personnel and movable objects within buildings and structures helps optimize your existing production processes and make work more secure. Along with public GPS, indoor localization is actively used in warehouses, factories, logistics companies, airports, railway stations, hospitals, fairs and museums.

What's more, indoor localization can be an excellent addition to systems for various purposes, and the transfer of position data to the control desk (T.Rodon) achieves centralization and increases work safety.

TASSTA indoor localization helps solve production problems at various levels of complexity – from fully automated localization of cargo pallets to the localization of mobile operating terminals. Deployment of TASSTA solutions at the enterprise increases employees' efficiency and coordination, and improves their interaction.

# LONE WORKER PROTECTION

- Man down
- Periodic check
- No movement alarm
- Emergency call
- Crisis team
- Remote camera/recording



A lone worker is someone who works on their own without close or direct supervision. Establishing a healthy and safe working environment for lone workers can be different from organizing the health and safety of other employees. They should not be put at more risk than other people working for you. It will often be safe to work alone. However, the law requires employers to think about and deal with any health and safety risks before people are exposed to their work environment. TASSTA Lone Worker Protection is an emergency feature set in your employee's pocket.

Whether your lone workers are working in a remote or dangerous location or are just temporarily away from their team, Lone Worker Protection feature by TASSTA keeps you connected to your team.

we are certified  
**BGR 139**  
STANDARD





# ENSURE SAFETY WITH LWP

Introducing Lone Worker Protection (LWP) - a comprehensive set of safety features designed to meet industry standards and ensure the well-being of lone workers. With LWP, you can work independently with peace of mind, knowing that you are connected to your team and protected in critical situations.

## KEY FEATURES OF LWP

### SAFETY MONITORING

LWP incorporates features such as man down detection, movement monitoring, impact detection, and battery level control to ensure your safety in hazardous environments.

### SENSOR CHECK

Before using LWP, perform a sensor check to ensure the proper functioning of all safety features. Follow the instructions on the screen to complete the check.

### EMERGENCY CONTACT

LWP enables emergency calls by GSM and emergency SMS, ensuring that your distress signals reach the assigned personnel. The contact numbers can be set by the administrator.

#### IMPORTANT REMINDERS:

- Switch T.Flex app to priority mode to ensure the correct functioning of LWP features. Refer to your device manual for details.
- Confirm with the administrator that LWP is enabled for your user account in T.Commander.
- All emergency messages created by LWP are stored in the emergency journal.

Stay safe and connected with Lone Worker Protection. Experience the ultimate safety solution by downloading TASSTA today!

### DISPATCHER PRESENCE

When enabled, LWP keeps you under the direct supervision of a dispatcher who is running T.Rodon. This mode ensures constant monitoring and immediate response in case of emergencies.

### PERIODIC CHECK

The Periodic Check feature prompts you at regular intervals to confirm your well-being. Respond to the prompt within the specified time to indicate your safety. Failure to respond triggers an emergency call.



# MAP TOOLS



## ENHANCING GEOGRAPHICAL OPERATIONS WITH T.RODON

T.Rodon, developed by TASSTA, incorporates a comprehensive Map Tools plugin that enables users to optimize their geographical operations.

With GPS tracking capabilities and integrated map components, Map Tools provides a range of features to enhance location-based activities and facilitate effective communication.

## MAP TOOLS FEATURES

### ZOOM, PAN & ROTATE

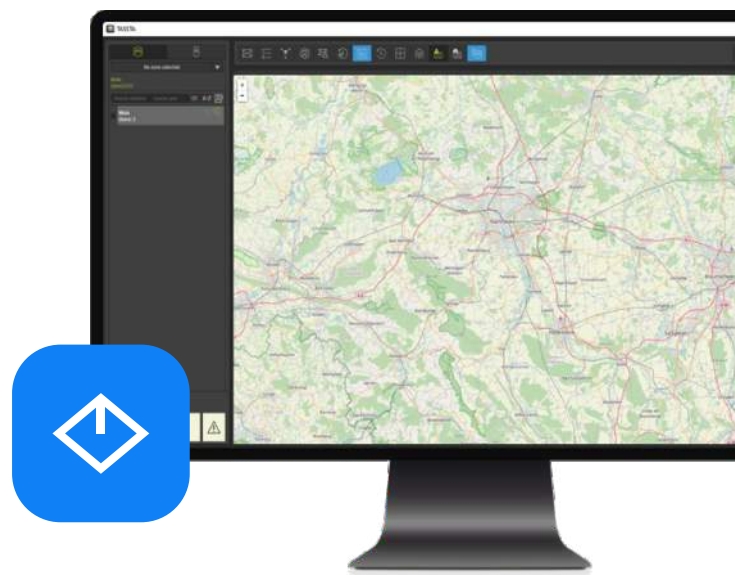
Users can easily navigate the map by zooming in and out, panning across the view, and rotating the map to their preferred orientation. Keyboard shortcuts, buttons on the map interface, and mouse gestures make navigation intuitive and seamless.

### DETAILED STREET VIEW

The integrated map component offers a detailed street view with essential information such as house numbers, road names, and addresses. It provides clear and precise location details, making it easier for users to identify specific areas and plan their activities accordingly.

### USER POSITIONING AND IDENTIFICATION

Map Tools displays the positions of TASSTA users on the map, allowing for real-time tracking. Each user is represented by an icon with a label indicating their name, group affiliation, and lone worker protection status. Additionally, icons change dynamically to indicate whether a user is actively speaking, in an emergency, or has unknown coordinates.



### COMMUNICATION AND ACTIONS

Users can leverage the integration of Map Tools with other TASSTA plugins to perform various actions directly from the map interface. These actions include sending messages, assigning tasks, making calls, muting users, and more. By right-clicking on a user's icon, users can access a context menu with these options for seamless communication and task management.

### CUSTOMIZATION

Map Tools allows users to customize the appearance and visibility of channels on the map. Users can assign different colors to channels, making it easier to distinguish between them. Additionally, users can choose whether the participants of a channel are displayed on the map or hidden for improved clarity.

# ADVANCED MAP TOOLS FEATURES



## POINTS AND WAYPOINTS

Users can create single points or waypoints on the map, which represent specific locations or transitions between locations. These points and waypoints can be used to define routes, assign tasks, or mark important areas.

## GPS HISTORY TRACKS

Map Tools provides the ability to visualize a user's recorded movements over time with points and segments on the map. Users can select a specific user and time range to display the GPS track history. This feature facilitates analysis, tracking, and review of user movements for monitoring and reporting purposes.

## DYNAMIC GROUPS BY AREA SELECTION

Users can quickly create dynamic groups based on users gathered in a specific area of the map. By selecting users within a defined region on the map, users can create dynamic groups instantly. This feature simplifies the process of organizing and managing users based on their geographical proximity.

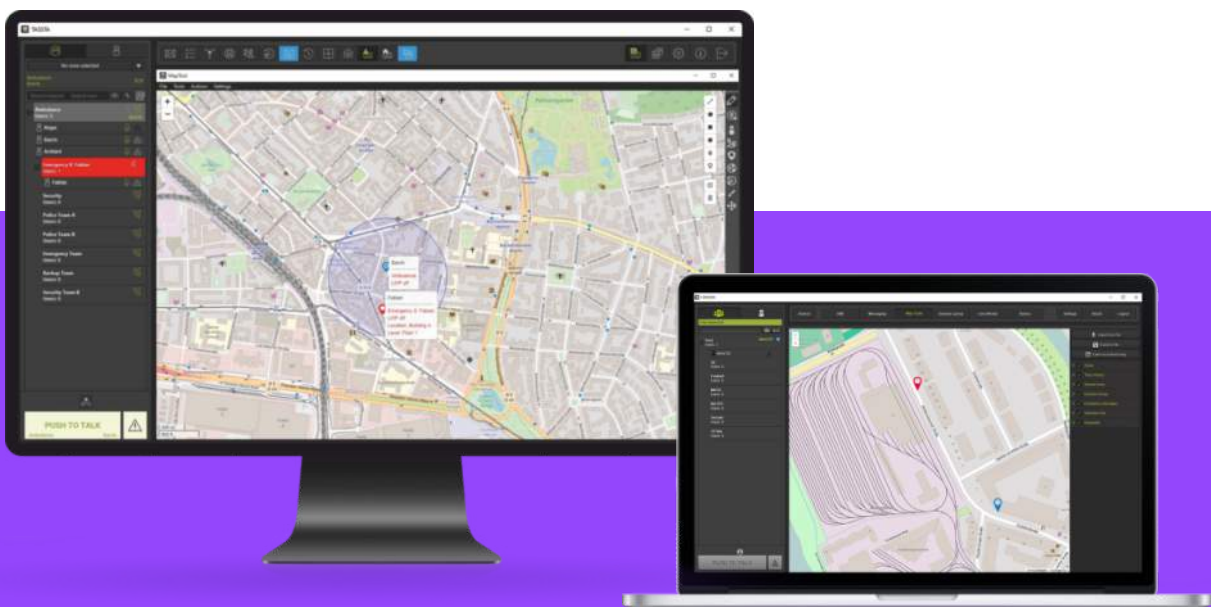
## GEOFENCING WITH ZONES

Map Tools enables the creation, management, and monitoring of virtual zones on the map. Users can define boundaries for geographic areas, such as cities or urban areas, and establish control and monitoring functionalities within these zones. This includes tracking user positions, receiving notifications about users entering or leaving a zone, communicating with users within a zone, and creating dynamic groups based on geographical locations.

## GUARD TOURS

Users can create and manage guard tours, which represent security patrol routes. Guard tours consist of checkpoints that users must visit in a specific order and according to a schedule. Map Tools allows users to create guard tours, configure checkpoints, assign them to users, and track progress during the tours. Events related to guard tours are recorded in the T.Rodon Events Journal.

By leveraging the comprehensive functionalities of Map Tools within T.Rodon, users can streamline their geographical operations, enhance communication, and optimize task management.



# EFFORTLESS ISSUE TRACKING WITH TASSTA TASK MANAGER



Efficiently manage all your tasks, invoices, orders, services, and more with TASSTA Task Manager, the universal issue tracking tool available in T.Rodon. Designed to cater to your company's unique needs, Task Manager simplifies issue management and ensures smooth workflows.

## KEY FEATURES

### SECURE DATA EXCHANGE

Rest easy knowing that your data is exchanged using the reliable and secure HTTPS protocol, guaranteeing the confidentiality and integrity of your communication.

### FLEXIBLE TRACKING

Customize issue trackers to match your requirements, whether it's tasks, invoices, orders, or any other type of issue. TASSTA Task Manager adapts to your workflow seamlessly.

### EXTENSIBLE ISSUE TYPES & STATUSES

Tailor the issue tracker types and statuses to align with your specific business processes, allowing for greater flexibility and customization.

### ATTACHMENTS AND HISTORY

Enhance collaboration and documentation by attaching relevant files such as invoices, images, or documents to issues. The History field keeps a record of all edits, providing a transparent overview of changes made.

### IMPORT AND EXPORT CAPABILITIES

Effortlessly import and export issues to enhance collaboration and facilitate data sharing. Use CSV files for easy integration with external systems, allowing for seamless issue management.

Enjoy the benefits of TASSTA Task Manager for streamlined issue tracking and enhanced productivity. Download TASSTS now and transform your workflow.



### REAL-TIME ISSUE STATUS

Stay updated with automated issue processing algorithms that provide real-time statuses, enabling you to track progress effortlessly.

### EFFORTLESSLY ASSIGN & PRIORITIZE

Assign issues to team members or individuals effortlessly, ensuring tasks are delegated effectively. With five colored levels of priority, you can easily manage and prioritize tasks based on urgency.

### COMPREHENSIVE ISSUE DETAILS

Capture all the necessary information with common issue details such as subject, description, time, and date. Additionally, track time spent on tasks and add custom fields to meet your specific tracking needs.

### SEAMLESS TEAM COLLABORATION

Assign tasks to teams and streamline collaboration. Create teams, add members, and ensure efficient coordination for enhanced productivity.

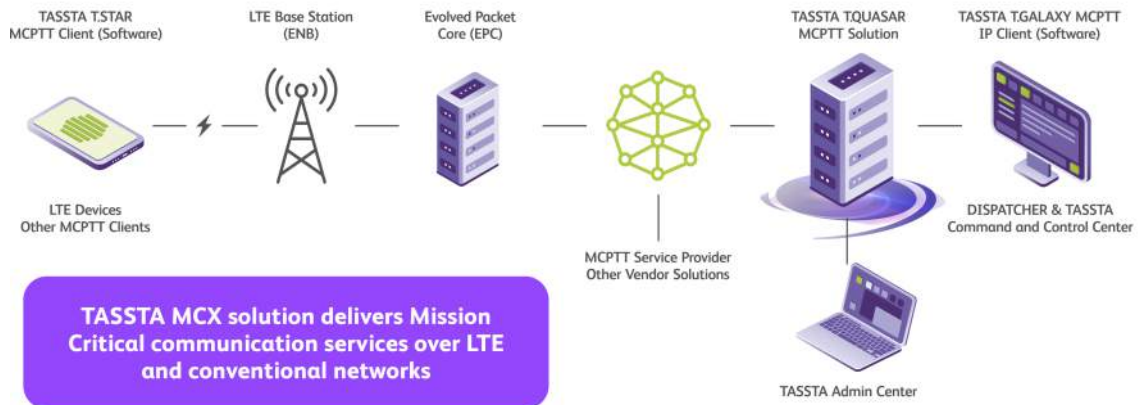
### SIMPLIFY ISSUE MANAGEMENT WITH FILTERS

Efficiently filter issues based on your specific criteria using the intuitive Issue filter feature. Combine multiple parameters to refine your search and gain precise insights.

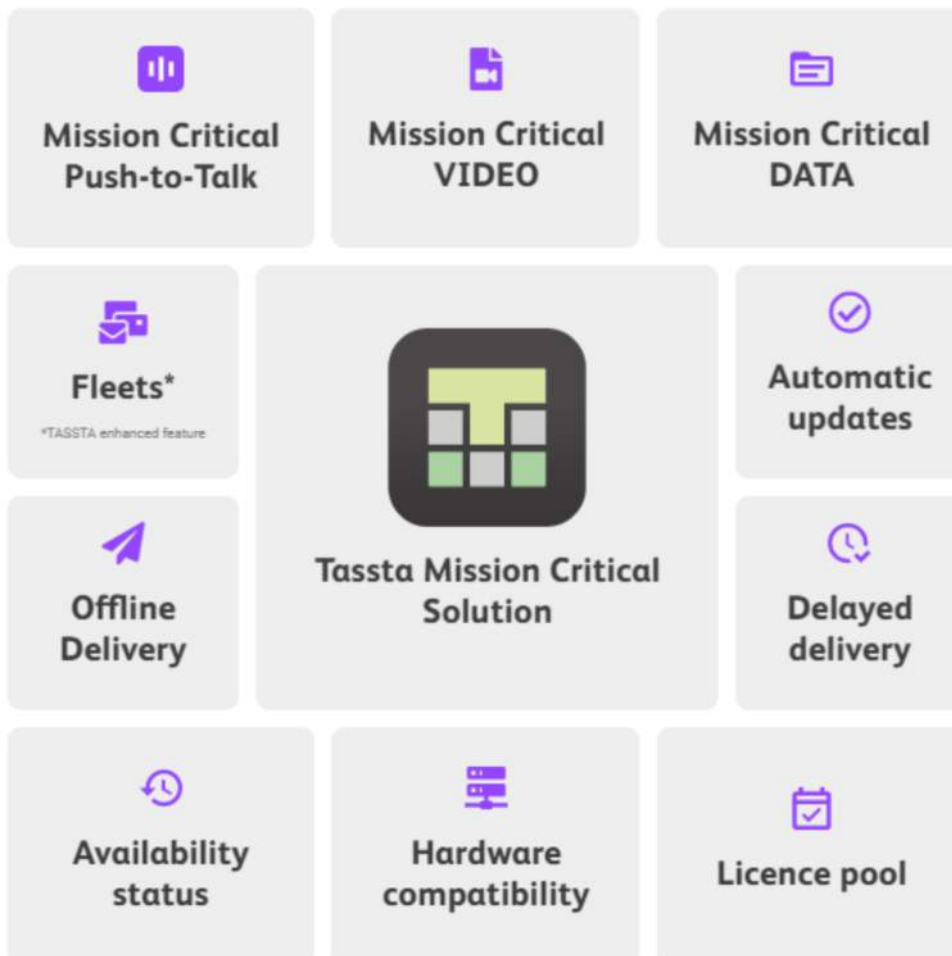
# MCX SOLUTION

The MCX TASSTA solution is applicable primarily to mission critical services relying on LTE availability.

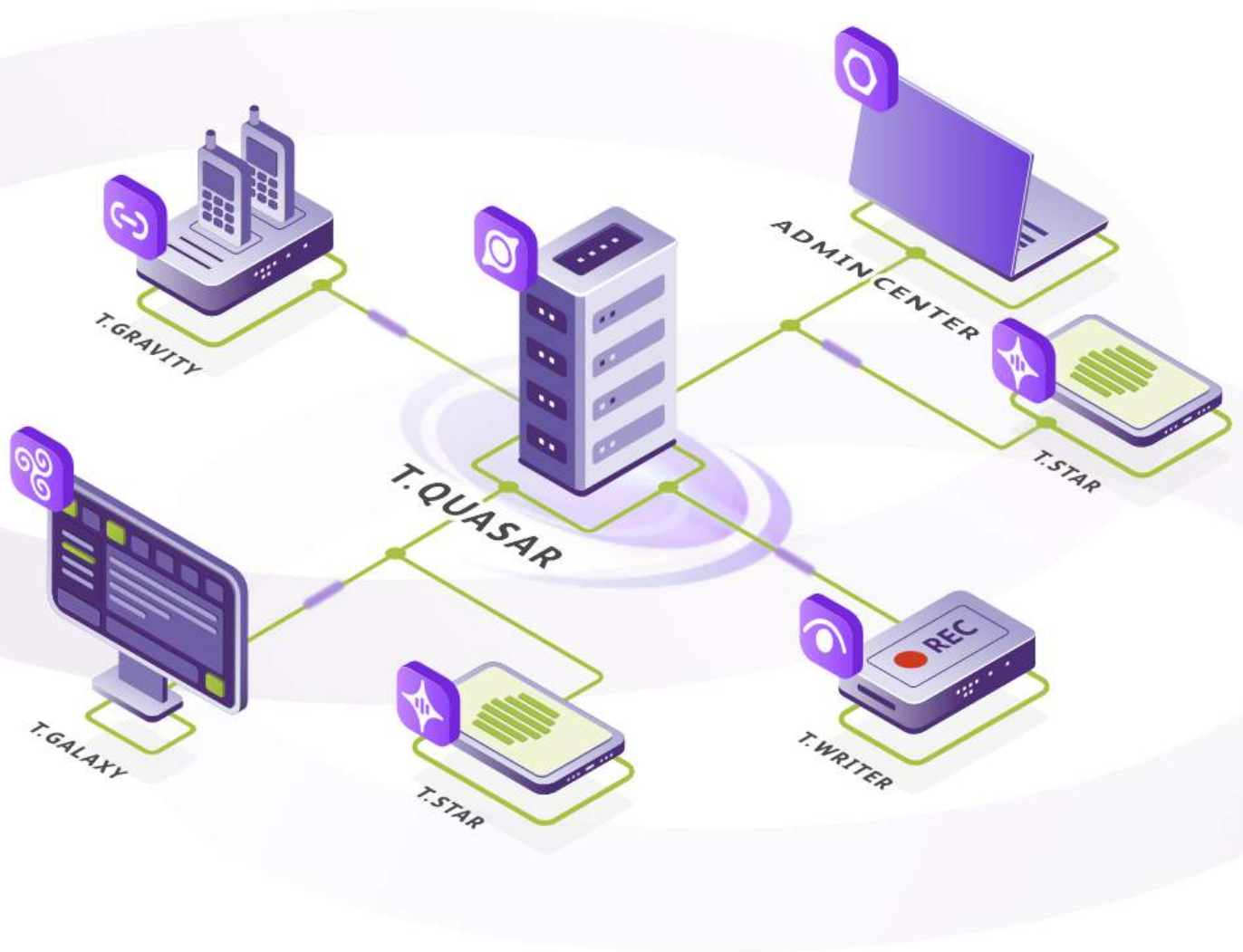
Certain mission critical service functionality sets such as dispatch and administrative functionality can also be supported over non-3GPP networks. The solution can be used for public safety applications and also for general commercial applications in businesses.



## FEATURES



# MCX ECOSYSTEM



# STANDARDS & CERTIFICATES



# UNLIMITED FEATURES

## FOR ANY OCCUPATION OR INDUSTRY

### USER INTERFACE

- Simple and intuitive interface that does not require IT experience;
- Broad customization options according to user's needs;
- Support for different languages and cultures;
- Integration with a wide range of devices and accessories, including professional radios;

### COMMUNICATION

- Group calls and channels;
- One-to-one calls;
- Emergency calls and broadcasts;
- End-to-end encryption;
- Cross calls with professional mobile radio (PMR) networks;

### MESSAGING

- Text messages;
- File and photo exchange;
- Status notifications;
- Communication bridging via SMS and email messages;

### VIDEO CALLS

- Push-to-Video and group video calls;
- One-to-one video calls;
- Emergency video calls;

### ACTIVITY HISTORY

- Call and message recording;
- Location history;
- Historical search, analysis and replay;

### MAP

- Detailed customizable map;
- Real-time displaying of user or device positions;
- Integration of the map with other functions;
- Geofencing with real-time alerts;
- Guard tours;

### INDOOR LOCALIZATION

- AI-based indoor positioning;
- No dedicated beacons required;
- 2D and 3D visualization;
- Interoperability with GPS data;

### TASK MANAGER

- Handle, prioritize and track orders in real-time;
- Dispatcher monitoring;
- Automated routines;

### REMOTE CONTROL

- Ambient listening;
- Remote camera control: photo & video;

### LONE WORKER PROTECTION

- BGR 139 certified protection of remote workers;
- Periodic checks;
- Movement and impact detection;
- Man down alarms;
- Device status monitoring;
- Automated emergencies.

# OFFICES AND PARTNERS



TASSTA Americas



TASSTA GmbH  
GMC TASSTA GmbH



TASSTA Technologies FZE



TASSTA Asia

**MORE THAN** 50 **partners worldwide**










# TASSTA

**All-in.**

+49 511 7275 2021  
hello@tassta.com  
tassta.com

-  [tasstaworld](#)
-  [t-a-s-s-t-a](#)
-  [TASSTAGmbHHannover](#)
-  [tassta\\_now](#)
-  [tassta\\_gmbh](#)