



# T.Lion

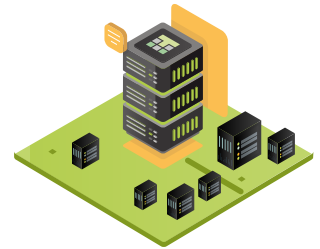
## Cloud-Based and On-Premises Communication Server



T.Lion is the TASSTA communication server – the main component of the TASSTA communication network as a whole. It is the heart and brain of the system. It shares resources among clients on demand and provides reliable communication with sub-second performance. Available in SaaS (software as a service) form or as a standalone on-premises deployment.

## STANDALONE

TASSTA services are hosted on your on-premises servers in your data center. You get maximum flexibility and full control over your data on your server.



## CLOUD

Hosted on top-of-the-line powerful web servers, designed as a Higher Availability system. The service is always up and running. Scheduled backups are set up for all data stored in accounts.



## T.COMMANDER: MANAGE SERVER RESOURCES

T.Commander is a web-based application created to control resources and features on TASSTA servers. It is designed for a large number of servers and nodes. Nodes are the logical representation of hosted resources that are handled by groups of servers. With this approach, T.Commander allows flexible maintenance and system expansion, deployment of new servers and nodes.

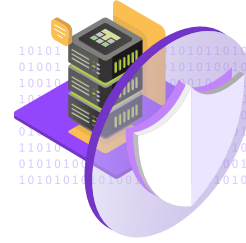
As a result, you have a single tool to control your environment. In particular, T.Commander lets the administrator create, delete and edit users, teams and groups. It also gives you tools to manage the set of functionality for each individual user. All the features that T.Flex and T.Rodon provide can be individually managed, enabled and disabled through T.Commander.

## ■ Scalability



The T.Lion system is enormously scalable and can run on nearly any combination of computing hardware and software. Its architecture enables multi-server connectivity, while providing cost efficiency and system redundancy by design.

## ■ Data Security



TASSTA network security is a more comprehensive solution than just asking for the user name and password. The T.Lion server provides the ability to selectively manage and administer access to a variety of TASSTA services and features, and to control the rights of each user and each group.

## ■ Data and Voice Encryption



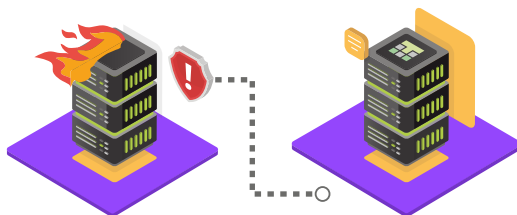
In order to secure T.Lion against advanced threats in complex and evolving cloud services, organizations must increasingly take a data-centric approach to safeguarding their sensitive information. TASSTA offers a full encryption portfolio that provides persistent protection of voice and data for a more secure level of communication.

## ■ Fleet Management



For staff responsible for fleets and operations, the T.Lion server offers specialized monitoring and tracking tools, grants them the ability to trace and record the movements of their mobile assets and workforce, record accurate GPS data and keep the history of their voice and data communication for a long time.

## ■ Redundancy



A way to improve availability and performance of TASSTA communication facilities. By using T.Brother, the redundant TASSTA server, in different geographically dispersed data centers, you ensure that end users take advantage of TASSTA services with maximum reliability.

## ■ Fallback Operation



A node can be deployed in a field environment and act as a standalone fallback-mode server. Furthermore, the node can be configured as part of a TASSTA cluster and connected back to the system as soon as the link is available again.